

## MACHINE-DATA

Machinetype	: Vertical Turret Lathe - Single Column
Make	: DÖRRIES
Type	: CTE 320/3400
Year	: 1981
Control type	: CNC
Control	: Siemens 8 T
Storage location	: Tönisvorst
Origin	: Germany
Delivery time	: immediately
Quotation	: ex warehouse
Price	: on request



## TECHNICAL DATA

faceplate diameter	3200 mm
swing diameter	5100 mm
turning height	2505 mm
cross rail - adjustment	1500 mm
max. ram stroke	1250 mm
slide adjustment	2000 mm
control	Siemens 8 T
tool changer	16 STK
table load	60 t
faceplate turning speed range -stepless-	0,8-100 U/min
feed	0,0 1-1000 mm/min
rapid traverse	6000 mm/min
drive of main spindle	75 kW
weight of the machine ca.	70 t
dimensions of the machine ca.	9,3 x 6,1 x 6,0 m

## TECHNICAL DESCRIPTION

*machine is in an excellent condition!!  
with div. accessories (photos available)*

*machine can be equipped with latest electrics and Siemens CNC control SINUMERIK  
840D sl for additional costs.*

## VIDEO-LINKS

Video No.1 : <https://www.youtube.com/embed/mUh8sPf7tdQ>

Vertical Turret Lathe - Single Column

**DÖRRIES**

CTE 320/3400

Stock no. :1038-20435

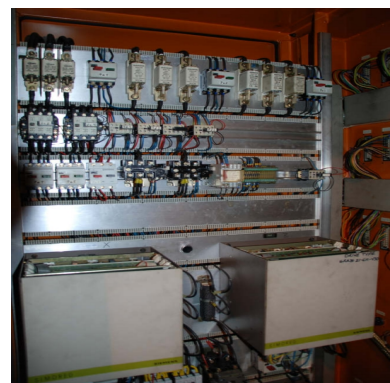
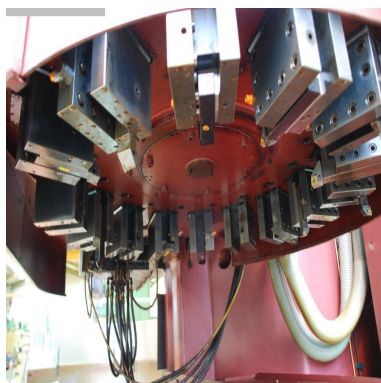
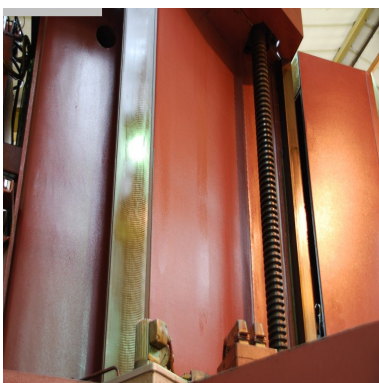
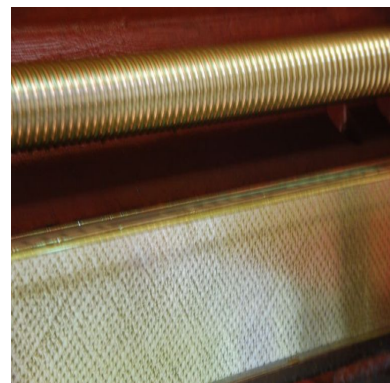
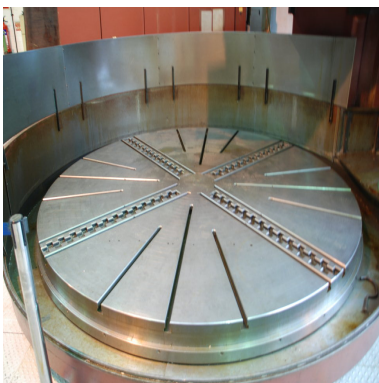


---

**WEB-LINK**

<http://mhp.logotech.de/hpm/v7/Datenblatt/datenblatt.php?machineno=1038-20435>

## MACHINE PICTURES



Technical details and information subject to amendments and errors.