

MACHINE-DATA

Machinetype	: Heavy Duty Lathe
Make	: SKODA
Type	: SRM 100
Year	: 1975
Control type	: conventional
Control	:
Storage location	: Tönisvorst
Origin	: Czech Republic
Delivery time	: immediately
Quotation	: ex warehouse
Price	: on request



TECHNICAL DATA

turning diameter over bed	1000 mm
turning diameter over slide rest	710 mm
turning length	7000 mm
max. workpiece weight between centres	10000 kg
spindle turning speed range	1,8-400 U/min
tailstock quill taper metric	80/1:10
tailstock - quill dia	170 mm
tailstock - travel of quill	200 mm
Tailstock quill travel speed	2150 mm/min
main drive motor	37 kW
longitudinal feeds:	0,125-48 mm/U
face feeds	0,4 der Längsvorschübe
weight of the machine ca.	17 t
dimensions of the machine ca.	11x1,9x2 m

TECHNICAL DESCRIPTION

machine was mechanically and electrically overhauled in the last years.

- taper turning function
- 3 lynettes
- misc. center points for tailstock
- set of change gears

VIDEO-LINKS

Video No.1 : https://www.youtube.com/embed/X_INSt5NfYs

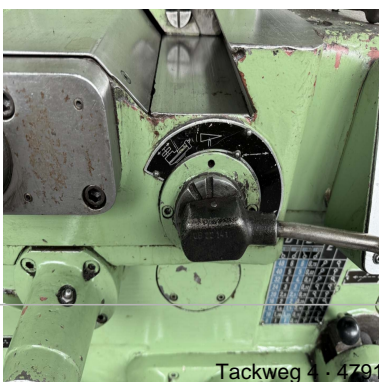
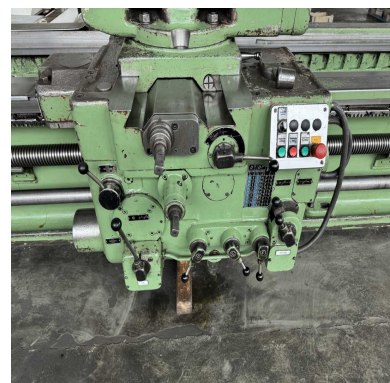
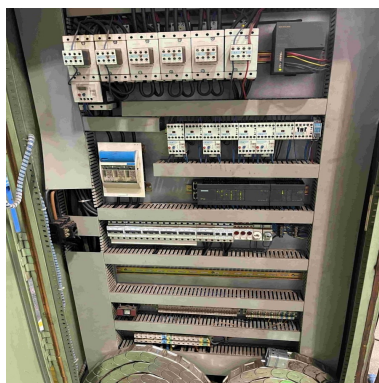
Heavy Duty Lathe
SKODA
SRM 100
Stock no. :1038-20976



WEB-LINK

<http://mhp.logotech.de/hpm/v7/Datenblatt/datenblatt.php?machineno=1038-20976>

MACHINE PICTURES



Technical details and information subject to amendments and errors.