

MACHINE-DATA

Machinetype : Conveyor system
Make : STAHLSEIL
Type : Gehaenge
Year :
Control type : conventional
Control :
Storage location : Tönisvorst
Origin : Germany
Delivery time : immediately
Quotation : ex warehouse
Price : on request



TECHNICAL DATA

Length of roller conveyors - infeed	0 mm
Length of roller conveyors - outfeed	0 mm
Numbers of cross transfers	0 Stck.

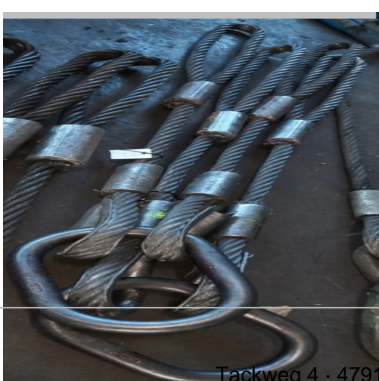
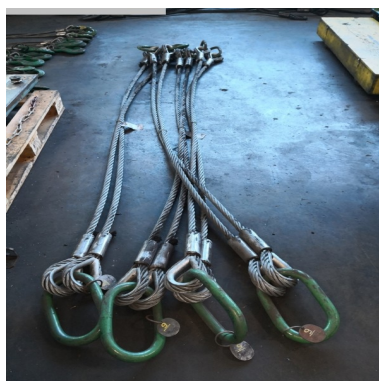
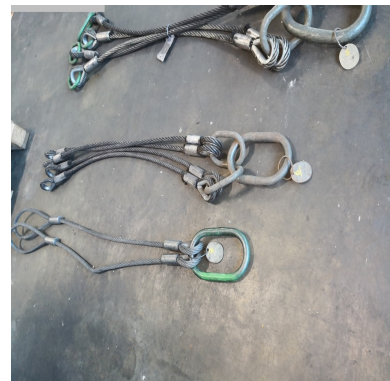
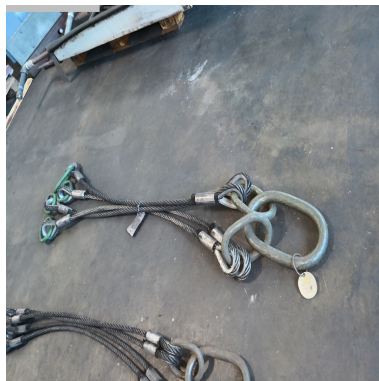
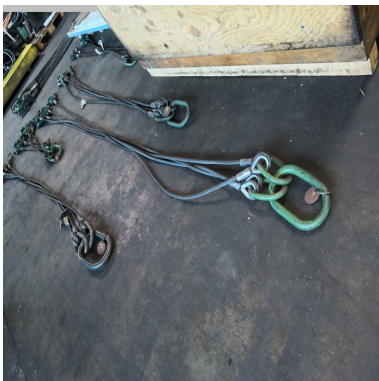
TECHNICAL DESCRIPTION

VIDEO-LINKS

WEB-LINK

<http://mhp.logotech.de/hpm/v7/Datenblatt/datenblatt.php?machineno=1038-80388>

MACHINE PICTURES



Technical details and information subject to amendments and errors.